

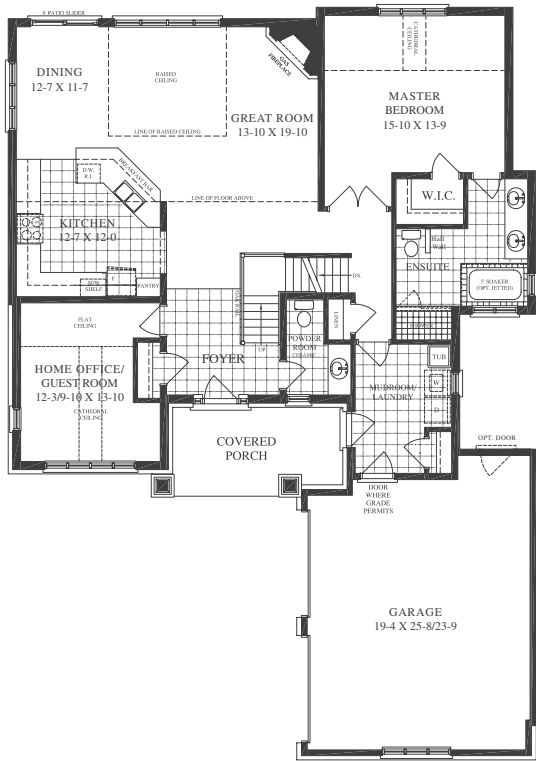
THE MASTERS COLLECTION

# *the* Turnberry *with* Loft (2522 sq.ft.)

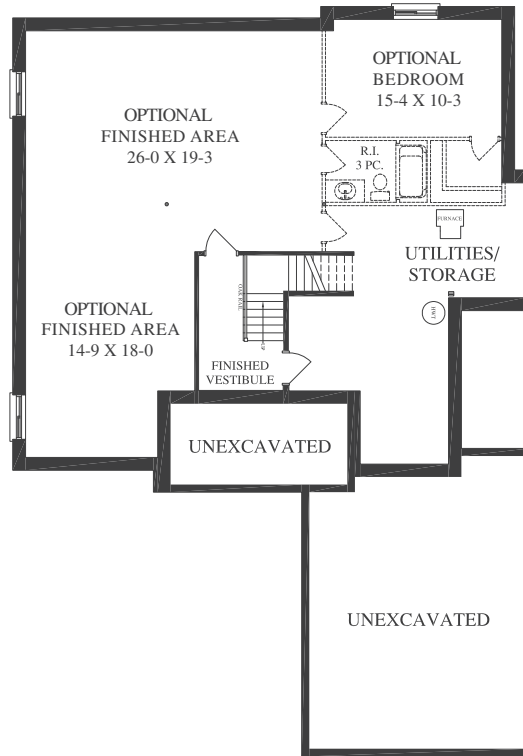
*(Includes 127 sq. ft. Finished Basement Vestibule)*



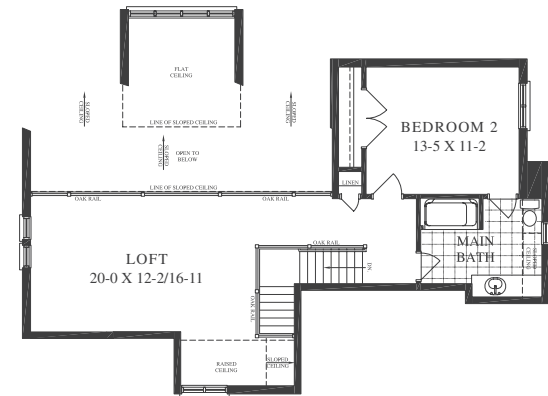
LORA BAY



MAIN FLOOR PLAN



BASEMENT FLOOR PLAN



LOFT FLOOR PLAN

# LORA BAY



All drawings are artist's concepts and may vary slightly from the final product. Actual usable floor space may vary from stated area, and square footage has been calculated based on usable living space according to the TARIION rules, and does not include garages or unfinished basement areas. Drawings may show optional features which may not be included in the base price. Bulkheads & box outs may be required as chases for plumbing & mechanical. Garage man door location, if applicable, may vary subject to grade. In an ongoing review of homeowner's needs, changes may have been incorporated into our "New Home Features" and construction techniques. Specifications subject to change without notice. E. & O. E. June, 2014.